



Laser Engraving(Cutting) Machine 1080


Model No : Laser Engraving(Cutting) Machine 1080
Product Name : Laser Engraving
FOB Port : NINGBO PORT
Payment terms: T/T, L/C or negotiate
Contact Person : Ms.Suaad Fan
Delivery Lead Time : 7-20days
View PDF file :  [Laser Engraving\(Cutting\) Machine 1080](#)
View Word file :  [Laser Engraving\(Cutting\) Machine 1080](#)

The Detail Description of Laser Engraving(Cutting) Machine 1080 :

Specification:

Laser power: 30-150W

Cutting thickness: 0-25mm(determined by materials)

Engraving speed: 0-64000(mm/min)

Cutting speed: 0-36000(mm/min)

Winimum shaping character: Chinese character 2x2mm,Letter 1x1mm

Resolution ration: 4000 dpi

Power supply: : AC220V;±10%,50Hz

Location procision: <0.01mm

Number of hanged line: : 90line

Gross power: <1250W

Operating temperature: 0~45jæ

Operating humidity: 5~95%(Free of condensed water)

Graphic format supported: BMP,GIF,JPEG,PCX,TGA,TIFF,PLT,CDR,DMG\DXF

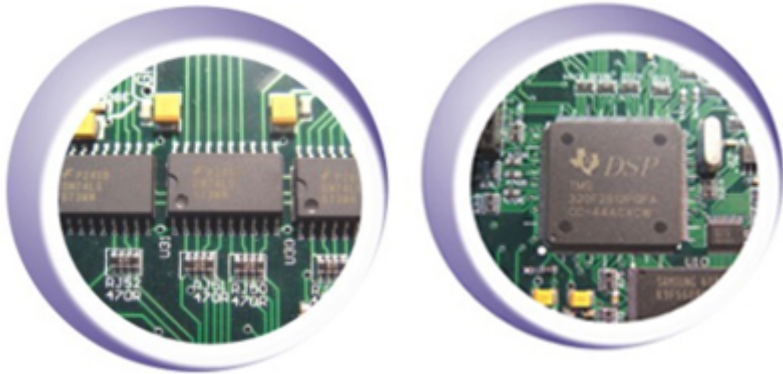
1080 Dimension: 1600 1390 1170 mm

Model	Processing area (mm)	Net weight (KG)	Model	Processing area(mm)	Net weight(KG)
6040	600X400	185KG	1680	1600X800	341KG
1080	1000X800	260KG	1610	1600X1000	385KG
1390	1300X900	310KG	1810	1800X1000	490KG

Machine Configuration:



Silica gel button with friendly interface convenient and flexible to operate
Improved six balance straight-line slide rail system



Encoder module: Achieve control system of closed ring for CMB series
32 digits DSP chip core of the controller promoting movement performance fully

Features:

Set-up SmartCarver controller, by adopting the international advanced 32 digits DSP chip. Improve the performance greatly. Stable software designer for acceleration and moderation controlling, moving quickly and stably. Associate with automatic light decline compensate technology can lead to a perfect results.

As isolating system of full photosensitive resister cooperation with high-speed difference dividing input-output circuit designer, transmit long distance without distortion, anti-interference ability is strong, the system can output 12 working states and 16 states input. And can dialogue with user's production scene easily.

Date transmit safely and high-efficiently contribute to Smartcarver controller adopting USB 2.0 high-speed interface to transmit data.

Applicable Materials:

Cloth, leather, wool, acrylics, wooden product, plastic, rubber, crystal, ceramic tile, jade.

Applicable Industry:

This series of machine is suitable to professional user who is concerning about processing result and comprehensive performance in garment, leather, cloth Toy, computerized embroidery and clipping, cutting of template, art gift, advertisement decoration, building upholster, package, printing, paper product and other industries

The Samples:



Fabrics button cutting garment industry



Fabrics cutting family adorning industry



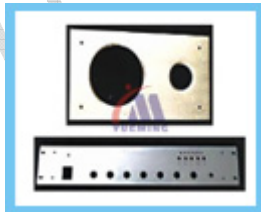
Leather cutting and engraving leather product industry



Applique cutting embroidery industry



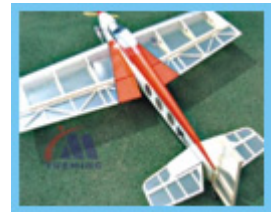
Wood box engraving packaging industry



DVD panel/board cutting electronic product industry



Acrylics cutting advertising industry



Wood cutting model industry

If you have any further inquiry, please feel free *Mail to me*